

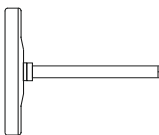
BIMETALL-POINTER-THERMOMETER



Accuracy class 1 all stainless steel

This high-quality version is especially for the many-sided use in mechanical, tank, rapidly flowing and machinery engineering as well as in the heating industry.



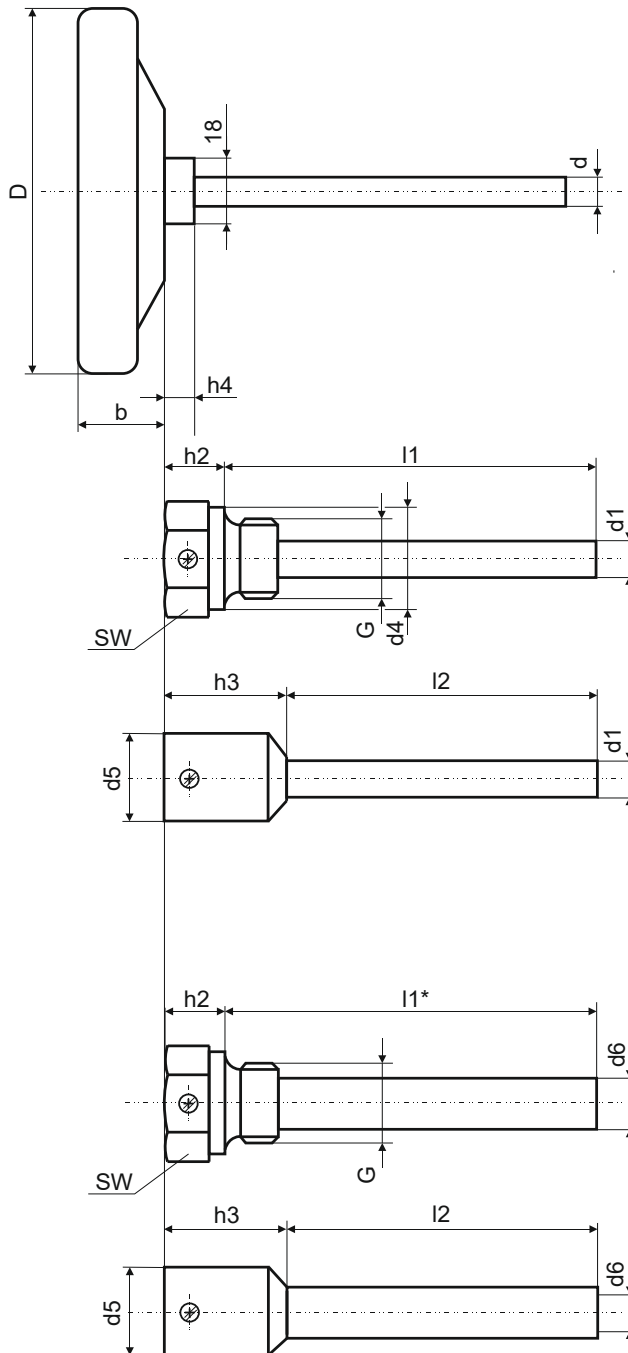
Type	10	Options
Nominal size	100	63, 80, 160...
Symbol		
Accuracy class	1	
Measuring ranges	-30...+50°C / -20...+60°C / 0...40°C / 0...60°C 0...120°C / 0...160°C / 0...200°C / 0...250°C 0...400°C / 0...500°C	-10...+50°C 0... 80°C / 0...100°C Scale °F Dual scale °C/°F
Application	Constant load: full scale short time up to 1 h: 1,2 of full scale	
Pressure at thermowell	see page 2	
Case / ring	1.4301 / 1.4016	with bayonet ring (10.1)
Adjustment	Correction screw on the dip tube end	
Dial	white, printing black, graduation acc. to DIN	
Pointer	Aluminium black	
Window	Flat instrument glass	
Plain stem	Ø 8 mm centric back	
Connection	Flat , with admission for the protecting tube You only use the thermometers in connection with a suitable protection tube.	with thread G½ or M20 x 1,5 turnable with rigid thread (Typ 10.2)
Plan stem length	(45), 63, 100, 160, 200, 250, 300, 400	Other on request
Protection	IP 43 (EN 60529/IEC 529), with bayonet ring IP56	
Weight (kg)	approx. 0,15	

Dimensioned drawings: Dimensions in mm

Type	D	d	b	d ₁	d ₁	d ₄	d ₅	d ₆	h ₂	h ₃	h ₄	G	SW	l ₁	l ₂
10 063	63	8	16	10	12	26	24	14	13	33	8	G1/2	27	45, 63, 100,	22, 43, 80,
10 080	80	8	17	10	12	26	24	14	13	33	8	G1/2	27	150, 200, 250,	140, 180
10 100	100	8	21	10	12	26	24	14	13	33	8	G1/2	27	300, 400	
10 160	160	8	25	10	12	26	24	14	13	33	8	G1/2	27	+ on request	

Type 998

Type 988, 968



Additionally required:

at static pressure:

Protection tube with lateral screw

Thread G 1/2A

Cu-alloy Type 988, PN6

St35 Type 968, PN25

Stainless steel 1. Type 998, PN25

Stainless steel 1.4301

Protection tube weld

St35 Type 969, PN25

1.4571 Type 999, PN25

at dynamic pressure:

**Protection tube with lateral screw
made of bulk material**

C22.8 Typ E 968, PN160

1.4571 Typ E 998, PN160

l1* 63,100,150,200

Protection tube weld made of bulk material

C22.8 Typ S 969 PN160

1.4571 Typ S 999 PN160